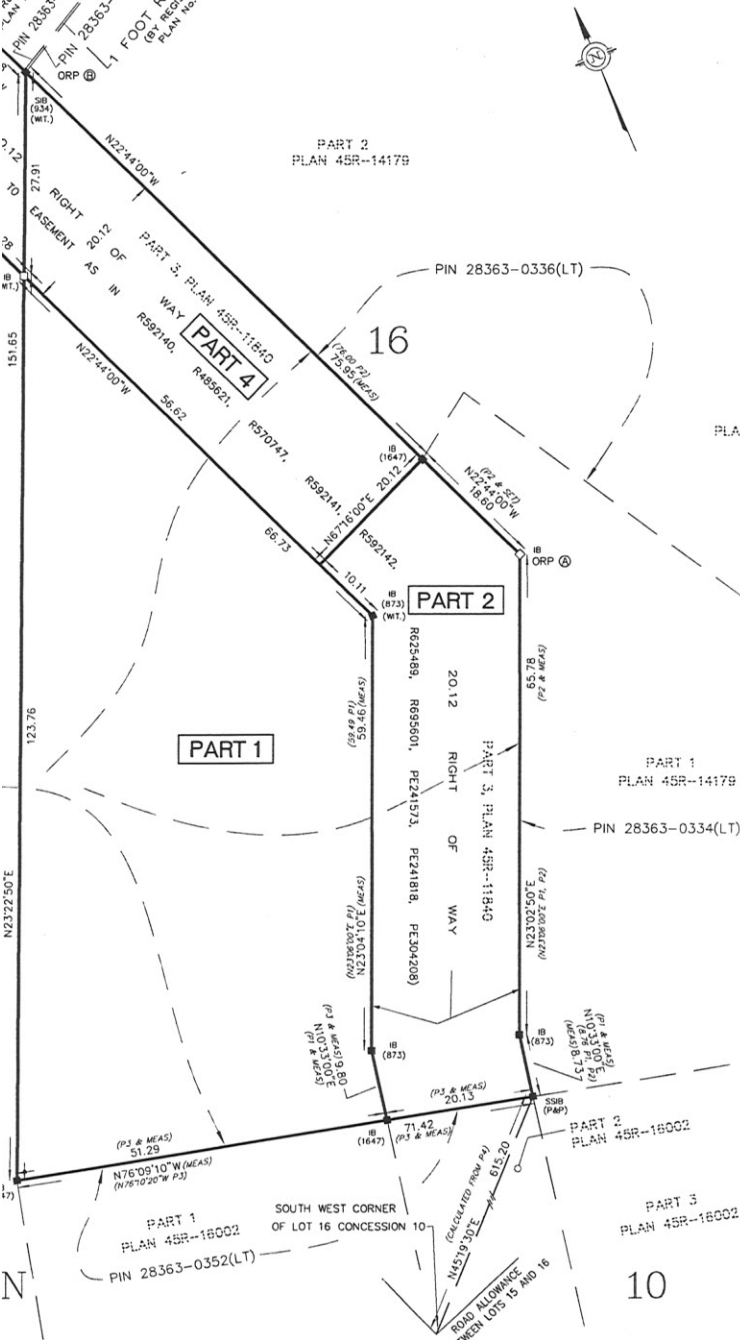


NOTES SHOWN HEREON ARE IN METRES  
ET BY DIVIDING BY 0.3048  
REGISTERED  
PLAN No. 23  
PIN 28363-0103(LT)  
1 FOOT RESERVE  
(R) REG. 249  
PLAN No. 23



SCHEDULE				
PART	LOT	CONCESSION	PIN	AREA
1	PART OF LOT 16	10	PART OF PIN 28363-0354(LT)	4668.2 sq. m.
2	PART OF LOT 16	10	PART OF PIN 28363-0354(LT)	1734.5 sq. m.
3	PART OF LOT 16	10	PART OF PIN 28363-0354(LT)	585.0 sq. m.
4	PART OF LOT 16	10	PART OF PIN 28363-0354(LT)	1333.2 sq. m.

PARTS 2, 3 AND 4 ARE SUBJECT TO EASEMENT AS IN R592140, R485621, R570747, R592141, R592142, R625489, R695601, PE241573, PE241818, PE304208

PLAN 45R-17556

Received and deposited

October 20<sup>th</sup>, 2023

Allison Turner

Representative for the  
Land Registrar for the  
Land Titles Division of  
Peterborough (No.45)

PLAN OF SURVEY OF  
PART OF LOT 16  
CONCESSION 10  
GEOGRAPHIC TOWNSHIP OF HARVEY  
MUNICIPALITY OF TRENT LAKES  
COUNTY OF PETERBOROUGH



SCALE: 1:500

THE INTENDED PLOT SIZE OF THIS PLAN IS 560mm IN WIDTH BY 430mm IN HEIGHT WHEN PLOTTED AT A SCALE OF 1:500

SURVEYOR'S CERTIFICATE

I CERTIFY THAT:

- THIS SURVEY AND PLAN ARE CORRECT AND ARE IN ACCORDANCE WITH THE SURVEYS ACT, THE SURVEYORS ACT AND THE LAND TITLES ACT AND THE REGULATIONS MADE UNDER THEM.
- THE SURVEY WAS COMPLETED ON 15 SEPTEMBER 2023

SIGNED AT LAKEFIELD, ONTARIO  
THIS 3RD DAY OF OCTOBER, 2023

CHRISTOPHER E. MUSCLOW  
ONTARIO LAND SURVEYOR

THIS PLAN OF SURVEY IS RELATED TO AOLS PLAN SUBMISSION FORM NUMBER V-49814

LEGEND

- DENOTES SURVEY MONUMENT FOUND
- DENOTES SURVEY MONUMENT PLANTED
- WIT. DENOTES WITNESS
- P&L DENOTES PIERCE & LYONS, O.L.S.
- P&P DENOTES PIERCE & PIERCE, O.L.S.
- E&P DENOTES ELLIOTT & PARR, O.L.S.
- 873 DENOTES W.A. BENINGER, O.L.S.
- P1 DENOTES PLAN 45R-11840
- P2 DENOTES PLAN 45R-14179
- P3 DENOTES PLAN 45R-15002
- P4 DENOTES PLAN 45R-17443

BEARINGS SHOWN HEREON ARE UTM GRID, DERIVED FROM REAL TIME NETWORK (RTN) OBSERVATIONS ON POINTS A AND B LISTED HEREON AND ARE REFERRED TO THE CENTRAL MERIDIAN OF UTM ZONE 17 (81° WEST LONGITUDE) NAD 83 (CSRS EPOCH 2010.0).

FOR BEARING COMPARISONS, A ROTATION OF 1°48'00" COUNTER CLOCKWISE WAS APPLIED TO BEARINGS SHOWN ON P1 AND P2.

DISTANCES SHOWN HEREON ARE GROUND DISTANCES AND CAN BE USED TO COMPUTE GRID DISTANCES BY MULTIPLYING BY A COMBINED SCALE FACTOR OF 1.00008685

INTEGRATION DATA

COORDINATES ARE DERIVED FROM GPS RTK OBSERVATIONS USING THE SMARTNET CORRECTION DATA AND ARE REFERRED TO UTM ZONE 17 (81°W LONGITUDE) NAD83 (CSRS EPOCH 2010.0).

OBSERVED REFERENCE POINT (ORP) COORDINATE VALUES ARE TO REMOTE ACCURACY SPECIFICATION IN ACCORDANCE WITH SEC. 14(2) OF O. REG. 216/10

POINT	UTM NORTHING	UTM EASTING
ORP (A)	4940158.91	707046.70
ORP (B)	4940246.12	707010.16

CAUTION: COORDINATES CANNOT, IN THEMSELVES, BE USED TO RE-ESTABLISH CORNERS OR BOUNDARIES SHOWN ON THIS PLAN.



JBFSURVEYORS  
3177 LAKEFIELD ROAD, BOX 70  
LAKEFIELD, ON K0L 2H0  
PHONE: 705-652-6198  
INFO@JBFSURVEYORS.COM  
WWW.JBFSURVEYORS.COM  
PROJ. # 9099RP