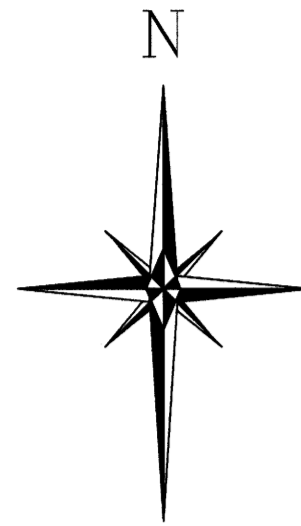
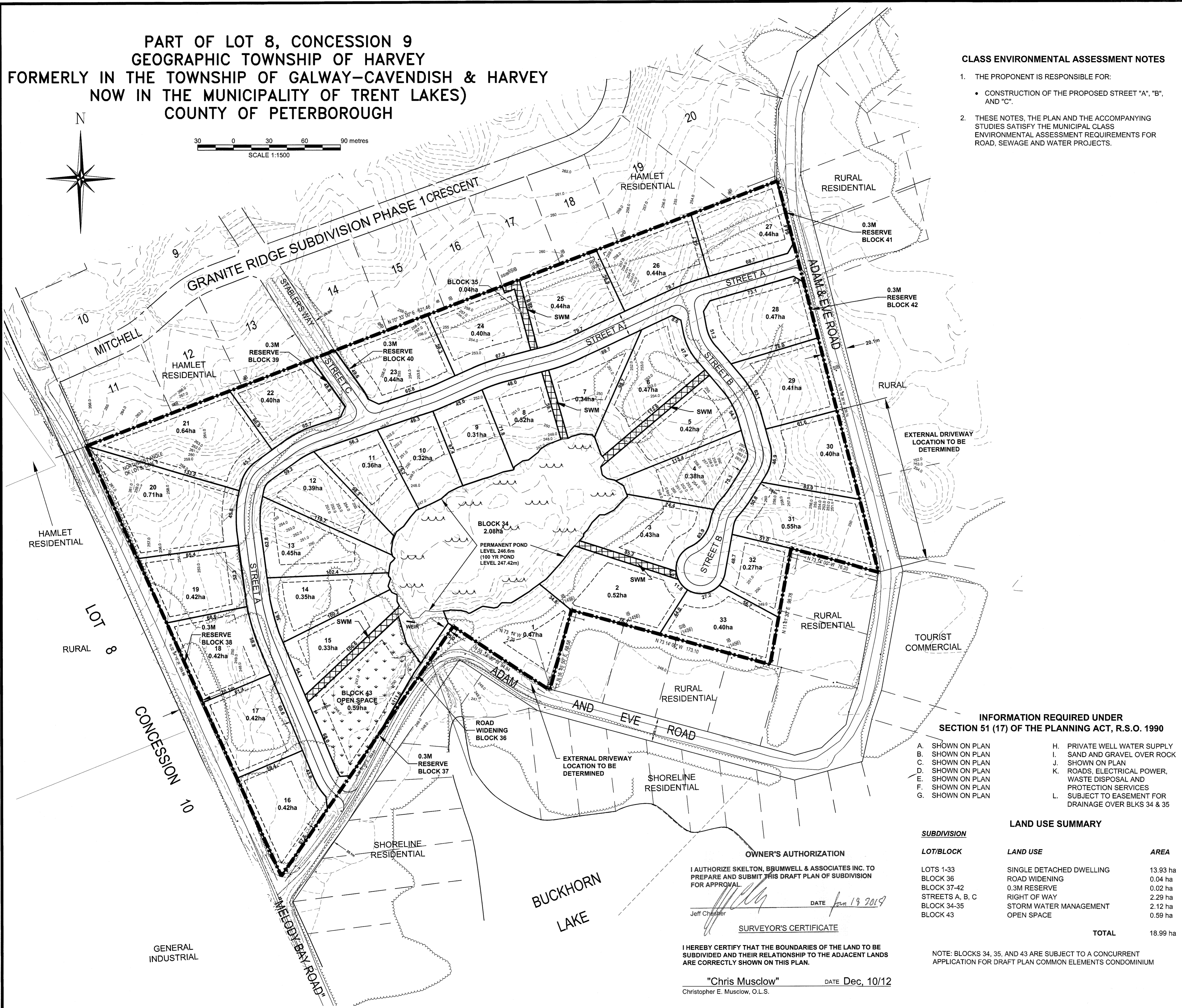


PART OF LOT 8, CONCESSION 9  
GEOGRAPHIC TOWNSHIP OF HARVEY  
FORMERLY IN THE TOWNSHIP OF GALWAY-CAVENDISH & HARVEY  
NOW IN THE MUNICIPALITY OF TRENT LAKES)  
COUNTY OF PETERBOROUGH



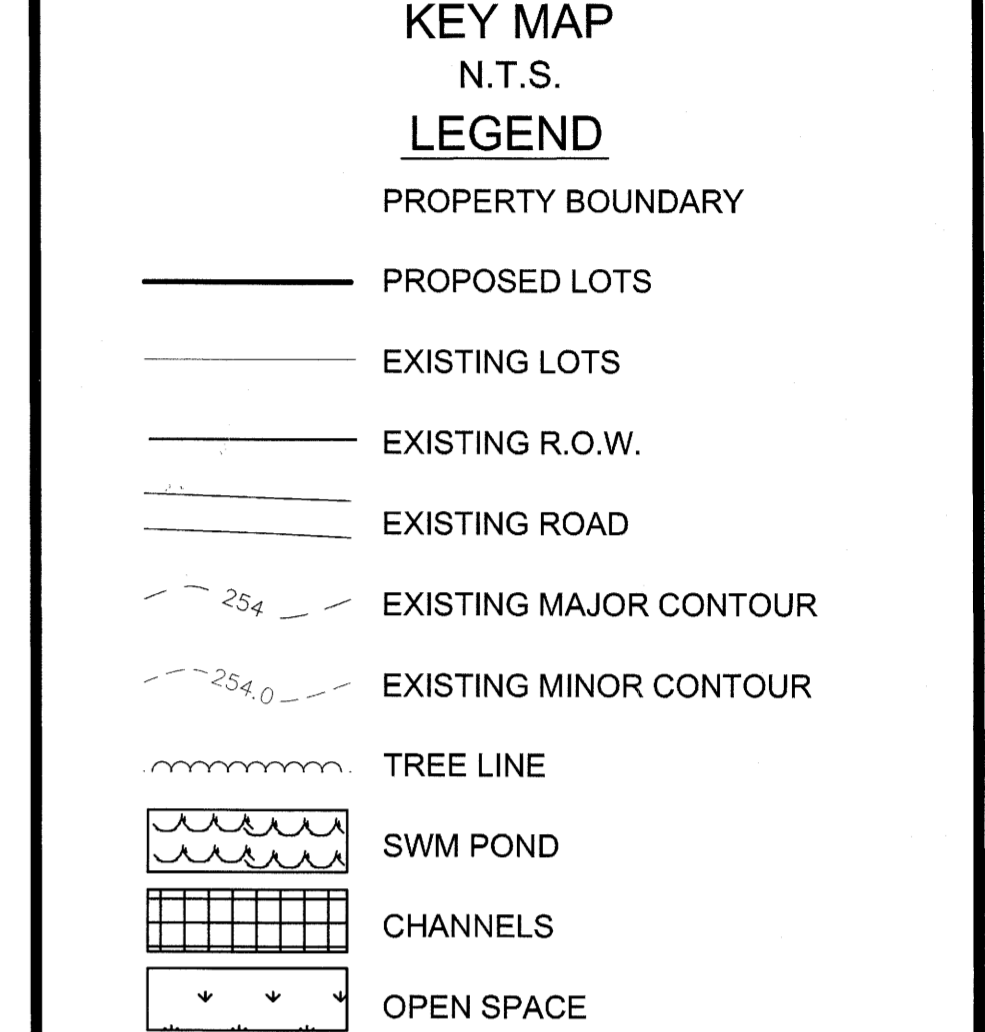
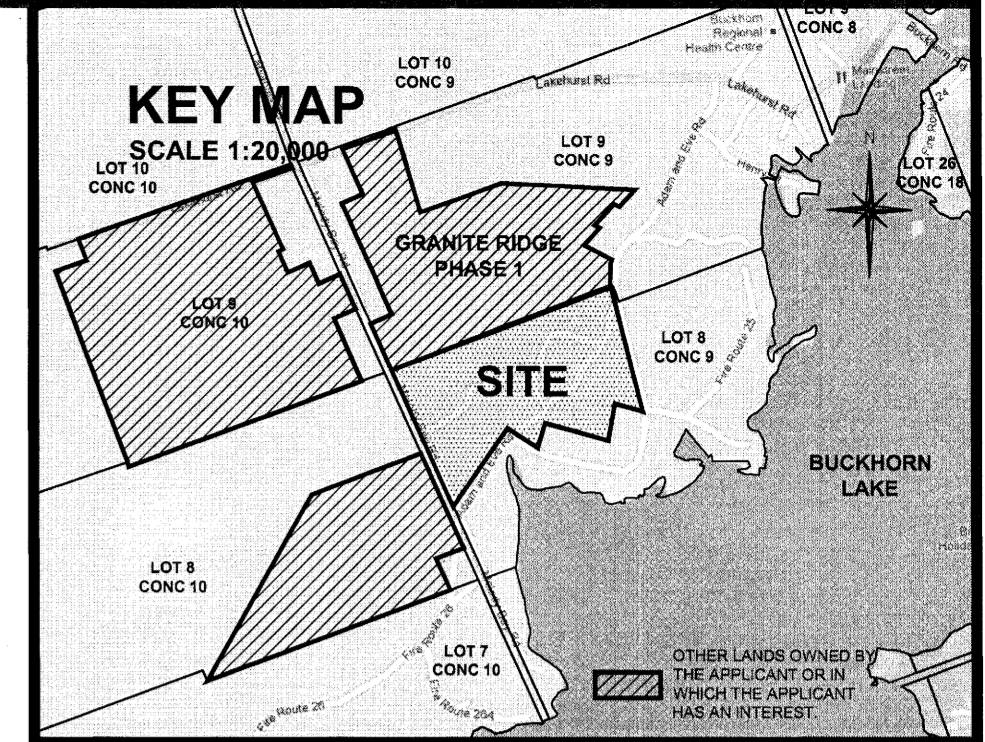
SCALE 1:1500  
0 30 60 90 metres

2361-DP



CLASS ENVIRONMENTAL ASSESSMENT NOTES

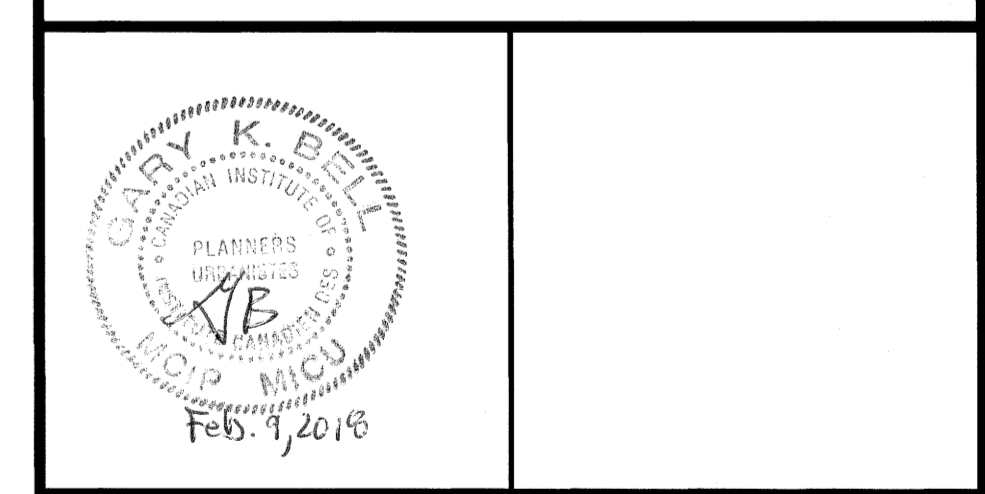
- THE PROPONENT IS RESPONSIBLE FOR:
  - CONSTRUCTION OF THE PROPOSED STREET "A", "B", AND "C".
- THESE NOTES, THE PLAN AND THE ACCOMPANYING STUDIES SATISFY THE MUNICIPAL CLASS ENVIRONMENTAL ASSESSMENT REQUIREMENTS FOR ROAD, SEWAGE AND WATER PROJECTS.



TOPOGRAPHIC MAPPING BY FIRST BASE SOLUTIONS BASED ON 2008 AERIAL PHOTOGRAPHY. LIMIT OF POND FROM TOPOGRAPHIC SURVEY BY J.B. FLEGUEL O.L.S., 2010.

SCHEDULE OF REVISIONS

NO.	DATE	DESCRIPTION	CHECKED
1.	NOV 2012	REVISE KEY MAP	TPP
2.	JUNE 2016	REVISED LOTS	
3.	FEB 2017	REMOVED SWM BLK 40, REALIGN INTERSECTIONS	
4.	JAN 2018	SWM AND OPEN SPACE BLOCKS	



INFORMATION REQUIRED UNDER SECTION 51 (17) OF THE PLANNING ACT, R.S.O. 1990

- |                  |  |
|------------------|--|
| A. SHOWN ON PLAN | H. PRIVATE WELL WATER SUPPLY                                       |
| B. SHOWN ON PLAN | I. SAND AND GRAVEL OVER ROCK                                       |
| C. SHOWN ON PLAN | J. SHOWN ON PLAN   |
| D. SHOWN ON PLAN | K. ROADS, ELECTRICAL POWER, WASTE DISPOSAL AND PROTECTION SERVICES |
| E. SHOWN ON PLAN | L. SUBJECT TO EASEMENT FOR DRAINAGE OVER BLKS 34 & 35              |
| F. SHOWN ON PLAN |  |
| G. SHOWN ON PLAN |  |

LAND USE SUMMARY

SUBDIVISION	LAND USE	AREA
LOTS 1-33	SINGLE DETACHED DWELLING	13.93 ha
BLOCK 36	ROAD WIDENING	0.04 ha
BLOCK 37-42	0.3M RESERVE	0.02 ha
STREETS A, B, C	RIGHT OF WAY	2.29 ha
BLOCK 34-35	STORM WATER MANAGEMENT	2.12 ha
BLOCK 43	OPEN SPACE	0.59 ha
	<b>TOTAL</b>	<b>18.99 ha</b>

OWNER'S AUTHORIZATION  
I AUTHORIZE SKELTON, BRUMWELL & ASSOCIATES INC. TO PREPARE AND SUBMIT THIS DRAFT PLAN OF SUBDIVISION FOR APPROVAL.  
DATE Jan 19 2019  
Jeff Chester

SURVEYOR'S CERTIFICATE  
I HEREBY CERTIFY THAT THE BOUNDARIES OF THE LAND TO BE SUBDIVIDED AND THEIR RELATIONSHIP TO THE ADJACENT LANDS ARE CORRECTLY SHOWN ON THIS PLAN.  
"Chris Musclow" DATE Dec, 10/12  
Christopher E. Musclow, O.L.S.

Copyright © 2017 Skelton Brumwell & Associates Inc. All rights reserved. This document is protected by copyright laws and may not be reproduced in any manner, or for any purpose, except with the written permission of the copyright holder.

GRANITE RIDGE SUBDIVISION PHASE 2  
MUNICIPALITY OF TRENT LAKES

DRAFT PLAN OF SUBDIVISION

PROJECT NO. 09-2361	DRWG NO. 2361-DP
DATE: MAY 2012	SCALE: 1:1500
DRAWN: BDD/CAP	CHECKED: [Signature] APPROVED: [Signature]

**SBA Skelton Brumwell & Associates Inc.**  
ENGINEERING PLANNING ENVIRONMENTAL CONSULTANTS

93 BELL FARM ROAD, SUITE 107 BARRIE, ONTARIO L4M 5G1  
www.skeltonbrumwell.ca

TELEPHONE (705) 726-1141  
FAX (705) 726-0331  
TOLL FREE (877) 726-1141