

METRIC: DISTANCES AND COORDINATES SHOWN HEREON ARE IN METRES  
CAN BE CONVERTED TO FEET BY DIVIDING BY 0.3048

SCHEDULE

PART	LOT	PLAN	PIN	AREA
1	PART OF BLOCK A	REGISTERED PLAN No. 32	PART OF PIN: 28363-0140(LT)	0.4 ha.
2	PART OF BLOCK A	REGISTERED PLAN No. 32	PART OF PIN: 28363-0140(LT)	372.16 sq. m.
3	PART OF BLOCK A	REGISTERED PLAN No. 32	PART OF PIN: 28363-0140(LT)	1.33 sq. m.

PARTS 1, 2 AND 3 COMPRISE PART OF PIN 28363 - 0140 (LT)

PLAN 45R-17881

Received and deposited

July 21<sup>st</sup>, 2025

Milena Redda

Representative for the  
Land Registrar for the  
Land Titles Division of  
Peterborough (No.45)

PLAN OF SURVEY OF  
PART OF BLOCK A, REGISTERED PLAN No.32  
GEOGRAPHIC TOWNSHIP OF HARVEY  
MUNICIPALITY OF TRENT LAKES  
COUNTY OF PETERBOROUGH



SCALE: 1:750

THE INTENDED PLOT SIZE OF THIS PLAN IS 560mm IN WIDTH BY 430mm IN HEIGHT  
WHEN PLOTTED AT A SCALE OF 1:750

SURVEYOR'S CERTIFICATE

I CERTIFY THAT:

- THIS SURVEY AND PLAN ARE CORRECT AND ARE IN ACCORDANCE WITH THE SURVEYS ACT, THE SURVEYORS ACT AND THE LAND TITLES ACT AND THE REGULATIONS MADE UNDER THEM.
- THE SURVEY WAS COMPLETED ON 29 APRIL, 2025

SIGNED AT LAKEFIELD, ONTARIO  
THIS 5th DAY OF JUNE, 2025

CHRISTOPHER E. MUSCLOW  
ONTARIO LAND SURVEYOR

THIS PLAN OF SURVEY IS RELATED TO AOLS PLAN  
SUBMISSION FORM NUMBER V-62437

LEGEND

- . . . . . DENOTES SURVEY MONUMENT FOUND
- . . . . . DENOTES SURVEY MONUMENT PLANTED
- WIT. . . . . DENOTES WITNESS
- SIB . . . . . DENOTES STANDARD IRON BAR
- SSIB . . . . . DENOTES SHORT STANDARD IRON BAR
- IB . . . . . DENOTES IRON BAR
- M . . . . . DENOTES MEASURED
- 873 . . . . . DENOTES W.A. BENINGER, O.L.S.
- HCB . . . . . DENOTES H. C. BISHOP, O.L.S.
- P1 . . . . . DENOTES PLAN OF SURVEY BY H.C. BISHOP O.L.S. DATED DECEMBER 1, 1967 - ATTACHED TO R219205
- P2 . . . . . DENOTES REGISTERED PLAN No.32
- P3 . . . . . DENOTES REGISTERED PLAN No.36
- P4 . . . . . DENOTES PLAN 45R-14797
- NTS . . . . . DENOTES NOT TO SCALE

BEARINGS SHOWN HEREON ARE UTM GRID, DERIVED FROM REAL TIME NETWORK (RTN) OBSERVATIONS ON POINTS A AND B LISTED HEREON AND ARE REFERRED TO THE CENTRAL MERIDIAN OF UTM ZONE 17 (81° WEST LONGITUDE) NAD 83 (CSRS EPOCH 2010.0).

FOR BEARING COMPARISONS, A ROTATION OF 1°48'30" COUNTER CLOCKWISE WAS APPLIED TO BEARINGS SHOWN ON (P1 TO P4 INCLUSIVE)

DISTANCES SHOWN HEREON ARE GROUND DISTANCES AND CAN BE USED TO COMPUTE GRID DISTANCES BY MULTIPLYING BY A COMBINED SCALE FACTOR OF 1.00007850

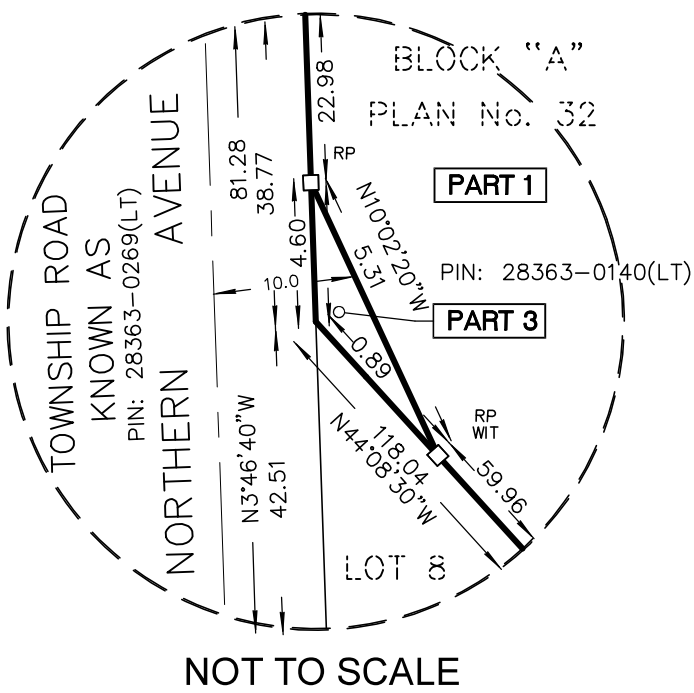


JBF SURVEYORS  
3177 LAKEFIELD ROAD., BOX 70  
LAKEFIELD, ON K0L 2H0  
PHONE: 705-652-6198  
INFO@JBFSURVEYORS.COM  
WWW.JBFSURVEYORS.COM

PROJ. # 9637\_RP

INTEGRATION DATA

COORDINATES ARE DERIVED FROM GPS RTK OBSERVATIONS USING THE SMARTNET CORRECTION DATA AND ARE REFERRED TO UTM ZONE 17 (81°W LONGITUDE) NAD83 (CSRS EPOCH 2010.0).		
OBSERVED REFERENCE POINT (ORP) COORDINATE VALUES ARE TO 'RURAL' ACCURACY SPECIFICATION IN ACCORDANCE WITH SEC. 14(2) OF O.REG. 216/10		
POINT	UTM NORTHING	UTM EASTING
ORP (A)	4940089.10	705213.41
ORP (B)	4940000.76	705382.02
CAUTION: COORDINATES CANNOT, IN THEMSELVES, BE USED TO RE-ESTABLISH CORNERS OR BOUNDARIES SHOWN ON THIS PLAN.		



NOT TO SCALE

